



ST MARK'S COLLEGE



BOSCO CAMPUS HANDBOOK



Contents

Key Contacts	3
---------------------	---

Teaching and Learning

Curriculum	4
Middle Years, 7-9	4
Senior Years, 10-12	5

Wellbeing and Pastoral Care

Student Wellbeing and WRAP	6
Home Group	6
Student Hub	7
House Structure	8
Engagement and Wellbeing Officer	8
School Counsellor	8
Bullying and Harassment	8

Student Life

Order of Time	9
Lesson Structure	9
Home Group	10
Lockers	10
BYOD (Bring Your Own Device)	10
Graphics Calculator	11
Mobile Devices	11
Network Access and Email	11
Sporting Opportunities	11

Administrative Procedures

Communication between School and Home	12
Attendance	12
SEQTA Engage	13
Operoo	13
Scholarships	14
Canteen	14
Uniform and Grooming	14
Important Policies	14

Important Documents

Bosco Campus Map	15
Behaviour Flow Chart	16
Mobile Device Flow Chart	17
Communication Flow Chart	18

➔ If reading this brochure electronically, wherever you see this symbol, click on the link to go directly to the relevant information on our website.

Our Vision

St Mark's College empowers students through excellent education to become curious, independent learners and just, compassionate global citizens.

Our Mission

As a Catholic community founded in the traditions of the Salesians and Good Samaritan Sisters, we:

- Invite our community into an experience of faith and spirituality
- Celebrate diversity, inclusion, and the unique gifts of each person
- Foster a community based on respect, compassion, and service to others
- Provide a contemporary learning environment that promotes joyful learning enabling students to excel and thrive
- Value collegiality, collaboration and positive partnerships with students, families, and our wider community.



Key Contacts

Bosco Student Services
Bosco Absentees

8633 8801
0428 475 539 (SMS only)

College Administration

8633 8800

Principal

Dr Sandra Hewson

8633 8836

Deputy Principal

Mrs Katie Pole

8633 8815

**Leader of Curriculum:
Middle Years**

Mrs Kate Elmendorp

kelmendorp@smc.catholic.edu.au

**Leader of Curriculum:
Senior Years**

Ms Ann Russack

arussack@smc.catholic.edu.au

Leader of Inclusive Education

Mrs Talia Sale

tsale@smc.catholic.edu.au

**Leader of Pastoral Care and
Wellbeing**

Mrs Jane Gibson

janegibson@smc.catholic.edu.au

Careers and VET

TBA

TBA

Year Level Coordinators

Year 7

Mr Caleb Brown

cbrown@smc.catholic.edu.au

Year 8

Mr Corey Davey

cdavey@smc.catholic.edu.au

Year 9

Mr Krisztian Elmendorp

krisztianelmendorp@smc.catholic.edu.au

Year 10

Mr Ben Goode

bgoode@smc.catholic.edu.au

Year 11

Mr Matt Munday

mmunday@smc.catholic.edu.au

Year 12

Mr John Gibson

johngibson@smc.catholic.edu.au



Teaching and Learning

Curriculum

St Mark's College provides a positive, nurturing and success orientated learning environment. We recognise and cater for individual differences and learning styles. Our curriculum is constantly evaluated to maintain the best standard in education that meets each student's need in our ever-changing world.

Curriculum Information is made available to families and students throughout the year via meetings for online selections of Core and Elective Subject offerings.

➔ For a full list of subjects at each year level, visit our website:
www.smc.catholic.edu.au/secondary/curriculum

Middle Years, 7 - 9

We welcome you to St Mark's College Bosco Campus. As you embark on your transition into high school, the ability to experience a holistic and broad range of studies is crucial for your development as a life-long learner. Through the Middle Years you will be able to develop a breadth of skills across and within a range of subject disciplines. The interconnected nature of the curriculum offerings will allow the students to develop of learner capabilities including: becoming knowledgeable, caring, open-minded, thinkers, communicators, reflective, inquirers and risk-takers as they undertake their own learning journey.

The foundation frameworks in the Middle Years College curriculum are based are the Australian Curriculum and 'Crossways', the Religious Education Curriculum for South Australian Catholic Schools. These frameworks support students in learning about themselves and their world and assist in the development of the General Capabilities including:

- Literacy
- Numeracy
- Information and Communication Technology
- Critical and Creative Thinking
- Personal and Social Capabilities
- Ethical Understanding
- Intercultural Understanding

To ensure the teaching and learning in each learning area is structured to meet the needs of the students, the curriculum is carefully developed to flow from the Primary Years into the Middle Years, allowing for a cohesive curriculum across all learning areas. Teachers construct inclusive programmes to meet the needs of the students in their specific learning area. Students in Year 8 and 9 are making choices within their elective lesson areas of study. Parents/carers play a crucial role in the education and formation of their children and therefore it is vital that parents/carers work with their child and the College to enable the best outcomes for each student.

Senior Years, 10 - 12

At St Mark's College, we aim to offer meaningful pathways for every student. Our students are prepared for life after school through a variety of opportunities including:

- School Based Apprenticeships
- University pathways
- Vocational Education and Training (VET)
- Formal SACE subject

The College provides students and families with:

- Information Sessions that cover the key areas of the SACE and important information about your child's Senior Years.
- Subject and Career Counselling sessions to prepare for life after school.

All Year 10 students will do a compulsory subject Stage 1 subject called the Exploring Identities and Futures (EIF). EIF prepares students for a different way of thinking and learning in senior school. As students begin their SACE journey, they build the knowledge, skills, and capabilities required to be thriving learners and are empowered to take ownership of where their pathway leads, exploring interests, work, travel and/or further learning.

All Year 11 students will do compulsory subject called Activating Identities and Futures (AIF). The intention behind AIF is for students to explore ideas related to an area of personal interest through a process of self-directed inquiry. They draw on relevant knowledge, skills and capabilities applying these in new contexts and selecting relevant strategies to progress the learning to a resolution.

In AIF students take greater ownership and agency over their learning 'learning how to learn' as they select relevant strategies 'knowing what to do when you don't know what to do' to explore, create and/or plan to progress an area of personal interest.

 **For more information about SACE, visit the SACE website:**
www.sace.sa.edu.au



Wellbeing and Pastoral Care

Student Wellbeing and WRAP

Across the College, our aim is to empower each individual student to grow as a person, to lead, to achieve and to contribute to our community and the greater society. These values are underpinned by The Preventative System of St John Bosco. Our teachers and College staff walk alongside students in work and play, providing our students with the opportunity of becoming trusted friends and mentors to them.

Our strategies are based on strengths-based classrooms. We aim to assist students to build on self-regulatory capabilities to build a sense of community and belonging, and to integrate wellbeing principles that focus on strengths and kindness.

Your child will engage in the WRAP (Wellbeing, Relationships, Agency and Personal Responsibility) Program for two scheduled lessons each week with their class group. This program is centred around the Child Protection Curriculum with a focus on child safety and respectful relationships. WRAP also boosts student learning in:

- Mental health awareness,
- Sense of identity,
- Social and emotional learning, and
- Mental health literacy.

Students across the College are further supported by an onsite School Counsellor and an Engagement and Wellbeing Officer.

At Bosco Campus, Our Home Group Teachers and Year Level Coordinators monitor, develop and support students' pastoral care, wellbeing and personal and spiritual growth during their time at the College. Parents and caregivers are encouraged to contact their child's Homegroup Teacher to discuss any issue that they are concerned with.

Home Group

Every student is part of a Home Group which includes a teacher, and students from their own year level. Home Group emphasises student wellbeing to support belonging and effective learning. Students build on their leadership and communication skills through facilitating their own morning circle.

Students will be advised which Home Group they are in and where it is situated on their first day at the College. Home Groups meet each morning for 15 minutes and this is a place of welcome and connection. Students must attend every day. This is the key to setting them up for a successful day.



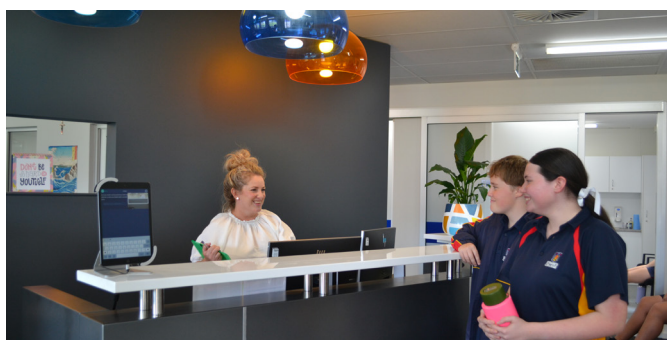
Student Hub

The Student Hub is a welcoming and open space designed to be a supportive and inclusive environment for students. It provides a dedicated space for students to connect and engage with one another, fostering social connections.

The Student Hub offers a variety of activities and resources to bring students together. It serves as a space for organising social events, clubs, and interest groups, allowing students to build meaningful connections with peers. The space encourages a sense of belonging and community by creating an atmosphere of warmth and inclusivity.

The Student Hub acknowledges the challenges and stressors that students may face throughout their academic journey. It endeavours to support student well-being by offering a range of services and resources. It provides a comfortable and confidential space where students can reflect and access necessary resources.

The Student Hub strives to be a vibrant, student focused space that not only connects students but also empowers and enhances their overall wellbeing here at the College.



House Structure

Our House structure is yet another layer of support and guidance, students find a home within a home - a place where they belong. Our House teams are Bosco (yellow), Gallagher (green), McNally (red) and Polding (blue).

Our staff help to build a community of young men and women who show great character, leadership and commitment to College life. House is a place where students can connect with peers across all year levels, a place filled with healthy competition, bright colours on sports day, a place of celebration and faithfulness.



BOSCO



GALLAGHER



McNALLY



POLDING

Engagement and Wellbeing Officer

College students and their families can access support with our Wellbeing Officer for attendance and wellbeing concerns. This confidential and holistic service is available and accessible for all students and families and provides support and strategies to achieve the best outcomes in school engagement. This service can be accessed by contacting the College.

School Counsellor

Students across the College are further supported by an onsite School Counsellor contracted through Centacare. The Counsellor provides one-on-one friendly and confidential services to assist with a range of issues including mental health, family and school concerns. Students and their families are able to access this service and can make an appointment during and outside of school hours, through their Year Level Coordinator by phoning the College.

Bullying and Harassment

Every child at St Mark's College has the right to feel safe, valued, happy and successful. Everyone in the St Mark's College community is responsible in ensuring this happens.

St Mark's takes a zero tolerance stance on bullying and harassment and have effective measures in place to prevent it. Students learn about the types of bullying and harassment and the steps they need to take if they are ever victim to it or witness it.

We encourage families to follow this process to report any bullying/harassment happening to their child/ren. These reports go directly to the relevant Year Level Coordinator and will be actioned promptly. All reports will be followed up in a timely manner. This process is designed to promote, implement and create a safe environment for all members of the St Mark's College community.

→ **Our Bullying and Harassment Flowchart and Reporting Forms are available on our website: www.smc.catholic.edu.au/about/general-information, scroll down to School Policies and click on Anti-Bullying and Harassment**



Student Life

Order of Time

Monday - Friday		
Movement Bell	8:40am	
Home Group	8:45am	9:00am
Lesson 1	9:00am	9:45am
Lesson 2	9:45am	10:30am
Recess	10:30am	10:50am
Lesson 3	10:50am	11:35am
Lesson 4	11:35am	12:20pm
Lesson 5	12:20pm	1:05pm
Lunch	1:05pm	1:45pm
Lesson 6	1:45pm	2:30pm
Lesson 7	2:30pm	3:15pm
Dismissal	3:15pm	

Lesson Structure

Students can view their daily and weekly timetable on SEQTA Learn (see page 12).
A typical timetable will look like this:

	Monday	Tuesday	Wednesday	Thursday	Friday	
HG	23_7_M Home Group	23_7_M Home Group	23_7_M Home Group	23_7_M Home Group	23_7_M Home Group	
BOS	M6 Mr Caleb Brown	M6 Mr Caleb Brown	M6 Mr Caleb Brown	M6 Mr Caleb Brown	M6 Mr Caleb Brown	
L1	7MDA3 Music and Drama BGC Ms Emily Smith	7REL M Religion M6 Miss Talia Phillipps	7HASM HASS M6 Miss Talia Phillipps	7ENGM English M6 Miss Talia Phillipps	7LNGM Language G1 Mr Armando Bonazinga	→ Subject
L2	7MDA3 Music and Drama BGC Ms Emily Smith	7HASM HASS M6 Miss Talia Phillipps	7HASM HASS M6 Miss Talia Phillipps	7MATM Maths M6 Ms Karina Darling	7REL M Religion M6 Miss Talia Phillipps	→ Teacher
L3	7SCIM Science S1 Ms Karina Darling	7SCIM Science S1 Ms Karina Darling	7ENGM English M6 Miss Talia Phillipps	7WRAPM Pastoral Care M6 Mr Caleb Brown	7ENGM English M6 Miss Talia Phillipps	→ Classroom
L4	7HPEM Health and Physical Education M6 Mr Corey Davey	7MATM Maths M6 Ms Karina Darling	7ENGM English M6 Miss Talia Phillipps	7HPEM Health and Physical Education M6 Mr Corey Davey	7TEC3 Design Technology Metal Mr Matt Gove	
L5	7DTEM Digital Technology M6 Mr Ben McInnes	7WRAPM Pastoral Care M6 Mr Caleb Brown	7MATM Maths M6 Ms Karina Darling	7DTEM Digital Technology M6 Mr Ben McInnes	7SCIM Science S1 Ms Karina Darling	
L6	7TEC3 Design Technology Metal Mr Matt Gove	7HPEM Health and Physical Education M6 Mr Corey Davey	7MATM Maths M6 Ms Karina Darling	7SCIM Science S1 Ms Karina Darling	7MDA3 Music and Drama BGC Ms Emily Smith	
L7	7TEC3 Design Technology Metal Mr Matt Gove	7ENGM English M6 Miss Talia Phillipps	7LNGM Language G1 Mr Armando Bonazinga	7HASM HASS M6 Miss Talia Phillipps	7MATM Maths M6 Ms Karina Darling	

→ For a full list of subjects at each year level, visit our website:
www.smc.catholic.edu.au/secondary/curriculum

Home Group

Every student is part of a Home Group which includes a teacher, and students from their own year level. Attendance at Home Group allows students to be organised, informed and sets them up for a successful day.

Students will be advised which Home Group they are in and where it is situated on their first day at the College. Pastoral Care is held in the same classroom each day (unless advised otherwise) and they must attend morning Home Group every day.

The first bell will sound at 8.40am and students must be seated by 8.45am. Should a student arrive to school during Home Group time, their teacher will mark their attendance on the roll as late. If they arrive after 9.00am, the student must present to Bosco Student Hub to sign in.

The Home Group teacher is the first contact in regards to your child at school.

Lockers

Students are provided with a secure locker to store their personal belongings in. This is secured with a built-in combination lock which students set with a personalised number. Locker use and allocation are explained by the Home Group teacher and Year Level Coordinator at the beginning of the year or on the students first day.

It is an expectation that all lockers are locked when not in use. Valuables should not be kept in lockers. The College holds no responsibility for lost or stolen items and reserves the right to inspect lockers if required.



BYOD (Bring Your Own Device)

All students, Year 6 – 12, will need to have a personal device to use at St Mark's College.

- The responsibility of this device lies with the student.
- Please ensure you have adequate insurance for the BYOD device.
- Devices must be charged at home daily.
- Devices should be kept in cases at all times and locked in lockers when not in use.

➔ **For further information about BYOD please access the BYOD Handbook on our website:**
www.smc.catholic.edu.au/enrolment/BYOD

Graphics Calculator

Students in each year level are now required to have access to a suitable scientific or graphics Calculator. These calculators have been procured by the College. The students requiring a calculator (ie. All Year 7 students and any new students in other year levels who do not already own one) will be issued with a College approved Calculator very early in Term 1 of the new school year. These will be invoiced in full at the beginning of the year.

If you have any questions or concerns regarding the above information, please feel free to contact Maryann Dunkley, Purchasing Officer at the College on 8633 8800.

Mobile Devices

All students are not to access their phones/devices while on Campus or involved in school-learning activities off site such as camps and excursions. Students are encouraged not to bring their mobile device to school however if the need arises, they are to be always kept in their lockers for safe storage. (This does not include laptops however inappropriate use will follow the same policy.)

Acceptable Use of a Mobile Device

Students are asked to always keep mobile phones/device in their lockers for safe storage. Year 10-12 students may for a particular lesson be asked to get their devices out of their lockers under teacher direction for a specific class activity and then turn it off and put it away at its conclusion. Students will need to have cash or a bank card to pay for their canteen purchases, not a mobile device. The canteen will not accept this form of payment. Parents are asked to use the school's formal communication policies if they need to contact their child during school hours. They do this by calling the Student Hub by phone on 8633 8801.

➔ **Our Mobile Phone Policy and Flowchart are available on our website, or see page 17:**
www.smc.catholic.edu.au/about/general-information, scroll down to **School Policies** and click on **Mobile Devices**

Network Access and Email

Every student is given access to the St Mark's College network. Prior to your first day, our ICT Department will create your login details and email address.

Specific time is set aside on your first day of school to ensure that students know how to use and can login to the network and use associated programs.

Sporting Opportunities

St Mark's College is unique in that not only do we offer extracurricular sports, but we also participate in weekend association teams. We see that as an exciting opportunity to ensure that each and every student is given a chance to challenge themselves and participate in community and active lifestyles.

➔ **For further information about our sporting opportunities, visit our website:**
www.stmarkspirie.catholic.edu.au/community/sport



Administrative Procedures

Communication between School and Home

There are many ways to communicate with the College. The Home Group teacher and Subject teachers are always your first port of call.

- **Home Group Teacher:** Time away from school, uniform related questions
- **Subject Teacher:** Assignments, due dates, extensions, understanding a task
- **Year Level Coordinator:** pastoral care, wellbeing, bullying and harassment
- **Bosco Student Services:** absences, sick, appointments, general questions

For further information see our Communication Flow Chart on pages 18-19.

Attendance

Late to school:

The first bell will sound at 8.40am and students must be seated by 8.45am. Should a student arrive to school during Home Group time, the teacher will mark their attendance on the roll as late. If they arrive after 9.00am, the student must present to Bosco Student Hub to sign in.

Absence from school:

Students are required to attend school regularly and are only to be absent for legitimate reasons with parental knowledge and written permission.

If a student is absent from school due to illness or other circumstances please either:

- SMS Bosco Student Hub on 0428 475 539 (provide full name of student and reason for absence)
- Phone Bosco Student Hub on 8633 8801 by 9.00 am to notify an absence of one day or longer.

For short-term absences, the onus is on the student to catch up with work. This is done through SEQTA and in consultation with the subject teacher.

For extenuating circumstances requiring longer absences the students and family will need to negotiate a modified learning program with his/her teachers through the Year Level Coordinator.

For planned absences of one or more weeks, the family must complete the appropriate Exemption Application form available from the Bosco Student Hub.

For unexplained absences or lates of greater than 3 days, a medical certificate may be requested and followed up by the Home Group teacher.

Students feeling unwell during the day:

Students feeling unwell must present to Bosco Student Hub for assessment. Staff will provide appropriate first aid and make contact with parents/caregivers if they are required to go home. Students must not contact their parents/caregivers to arrange collection under any circumstances.

Leaving school during the day:

Students are expected to remain on the schools grounds for the full school day.

When a student is required to leave school early for necessary appointments, the parent/caregiver must communicate this to the College by either:

- SMS Bosco Student Hub on 0428 475 539
- A dated and signed note from the parent/caregiver with specific information regarding the destination (i.e. full doctor's name, not "doctor's appointment"). The note should be shown at the Bosco Student Hub when signing out.
- Phone Bosco Student Hub on 8633 8801.

On returning to school, the student must sign in at the Bosco Student Services.

Students are expected to plan their out of school commitments so that they do not clash with their learning program.

SEQTA Engage - for Parents

SEQTA is the College's Learning Management portal enabling students, parents and teachers to better engage in the wellbeing and learning of our students.

SEQTA Learn is for Students. SEQTA Engage is for parents and will give you access to your child's timetable, homework, assessments, courses and results. Parents will receive a welcome email to set up their access.

If have not yet used SEQTA Engage or have not received the Welcome Email to set-up your SEQTA Engage, please contact the College SEQTA Administrator, Janita DeGioia on 8633 8815.

It is recommended that parents install the SEQTA Engage app for Apple or Android. This free app can be accessed via the Apple App Store or Google Play on your device.

Operoo

Operoo is the College's primary source of communication.

This online platform allows families to keep your child's important medical data up-to-date. Parents will be requested to update their child's medical information regularly.

The College will send out all communication regarding events, excursion consents and important information to families via Operoo, we encourage you to check Operoo on a regular basis.

Notification when a new Operoo note is received will come via your email and the app.

A request will be sent to parents/caregivers to create a new profile for their child / children before they start school.

It is recommended that parents install the Operoo app for Apple or Android. This free app can be accessed via the Apple App Store or Google Play on your device.

Scholarships

St Mark's College offers a range of scholarships for secondary students. The scholarships are based on leadership, sporting endeavour and involvement in academic and community life. Scholarships are open for application the year prior.

➔ For more information about our range of scholarships, visit our website:
www.smc.catholic.edu.au/enrolment/scholarships

Canteen

The Flexischools app is used by the College Canteen for students/parents to place their recess or lunch orders. Parents are able to create an account and select St Mark's College. Parents will be able to view the menu and place orders on the app. Daily specials are advertised in the fortnightly newsletter.

➔ For further information about Flexischools or to download the app, visit:
flexischools.com.au

Uniform and Grooming

Our uniform is a defining feature of membership of our school community. It is a very public expression of who we are and what we value. Our expectation is that the uniform is worn in a way that shows a personal discipline, reflects pride in self and a respect for the College.

The PE uniform is only to be worn on days when PE is a timetabled lesson, unless otherwise communicated. Hats are compulsory for Terms 1 and 4.

➔ For more information about our Uniform Guidelines including our Uniform Policy visit our website:
www.smc.catholic.edu.au/enrolment/uniform

Important Policies

While the College has a number of policies, there are some key policies along with flow charts that we wanted to include in this handbook:

- Behaviour Flow Chart, see page 16
- Communication Flow Chart, see pages 18-19
- Deadline Policy, see website link below
- Mobile Device Policy, see website link below
- Mobile Device Flow Chart, see page 17

➔ For more information about our School Policies, visit our website:
www.smc.catholic.edu.au/about/general-information and scroll down to 'School Policies'.

BOSCO CAMPUS



St Mark's College

Behaviour Flow Chart

LOW

Teacher Managed

- Disruption to learning
- Not completing work
- Disrespect
- Physical contact-pushing, tripping, wrestling
- Uniform infringement

Response Options

- Prompt to change behaviour
- Re-direct the behaviour (choice and strength focused)
- Reference values/expectations
- Logical Consequences (yard duty with teacher)
- Restorative Conversation (see Triage)

Follow Up

- If behaviour continues, teacher to email the family. Place note on seqta for YLC in readiness of further support
- (Uniform infringement: Home group teacher to send an email home. If the problem persists YLC to follow up)

MEDIUM

Teacher Managed with support of YLC

- Swearing/repeated rudeness
- Mobile phones
- Ongoing refusal to follow instructions/ defiance.
- Disruption to teaching /learning
- Repeated teasing/ harassment
- Repeated talking back

Response Options

- Call 801 if support needed.
- Re-direct behaviour (choice and strength focused)
- Restorative conversation & agreement made (Triage conversation)
- Withdrawn from class to calm (5 mins)
- SEQTA note & contact made to parents
- Refer to Mobile Device policy

Follow Up

- Negotiated Community service (loss of lunch, recess, before or after school)
- Repair paperwork (reflection by student)
- Teacher contacts parent & YLC
- Repeated - 1 week on Ready to Learn Plan Contract
- Meeting with family if behaviours persist (where necessary- YLC or Leaders to take class to allow teacher to restorative conversation with student)

HIGH

YLC and Leader Managed

- Aggression: verbal, physical, emotional
- Bullying - Verbal, physical emotional
- Racial slurs/innuendoes
- Social Media - out of school resulting in disruption in school (teaching & learning)

Suspension

- Inappropriate sexualised behaviour
- Violence of any description

Response Options

- Call 801 for leadership or support (in the case of aggression)
- Incident report completed
- Student withdrawn from class for reflection.
- Internal or external suspension
- Student placed on Ready to Learn contract.

Follow Up

- Restorative conversation between affected parties (leadership to facilitate)
- Contact made with family (Leadership or YLC depending on severity)
- Teacher /YLC/ Leadership work together to have ongoing communication with family

YLC / Leader to meet with family (if necessary)

- SEQTA notes to all students teachers
- Formal notification letter to family of incident & follow up
- Re-entry meeting if required - teachers informed of re-entry conversation

St Mark's College

Mobile Device Policy (Parents)

MOBILE DEVICE POLICY

Mobile Devices Policy

All students are not to access their phones/devices while on Campus or involved in school-learning activities off site such as camps and excursions. Students are encouraged not to bring their mobile device to school however if the need arises, they are to be always kept in their lockers for safe storage.

(not including laptops however inappropriate use will follow the same policy)

Acceptable Use of a Mobile Device

Students are asked to always keep mobile phones/device in their lockers for safe storage.

Year 10-12 students may for a particular lesson be asked to get their devices out of their lockers under teacher direction for a specific class activity and then turn it off and put it away at its conclusion.

Students will need to have cash or a bank card to pay for their canteen purchases, not a mobile device. The canteen will not accept this form of payment.

Parents are asked to use the school's formal communication policies if they need to contact their child during school hours. They do this by calling the Student Hub by phone on 8633 8801.

MOBILE DEVICE BREACH CLASSROOM OR YARD

STEP 1

Student to follow direction of classroom teacher or yard duty teacher. They must immediately turn off device & hand in to admin staff in the Student Hub.

STEP 2

Device will be placed in a labelled envelope with name, home group and date.

STEP 3

Admin staff to keep phone in a secure location & breach recorded in SEQTA.

STEP 4

1st Breach Email sent to parents

STEP 5

Student to collect device from Student Hub at the end of the day.

STEP 6

Second and subsequent breaches – steps 1 – 3 will occur.

STEP 7

2nd Breach Email to parents - This email advises that the device will be held at the College Admin Office until a parent is able to collect.

ONGOING BREACHES

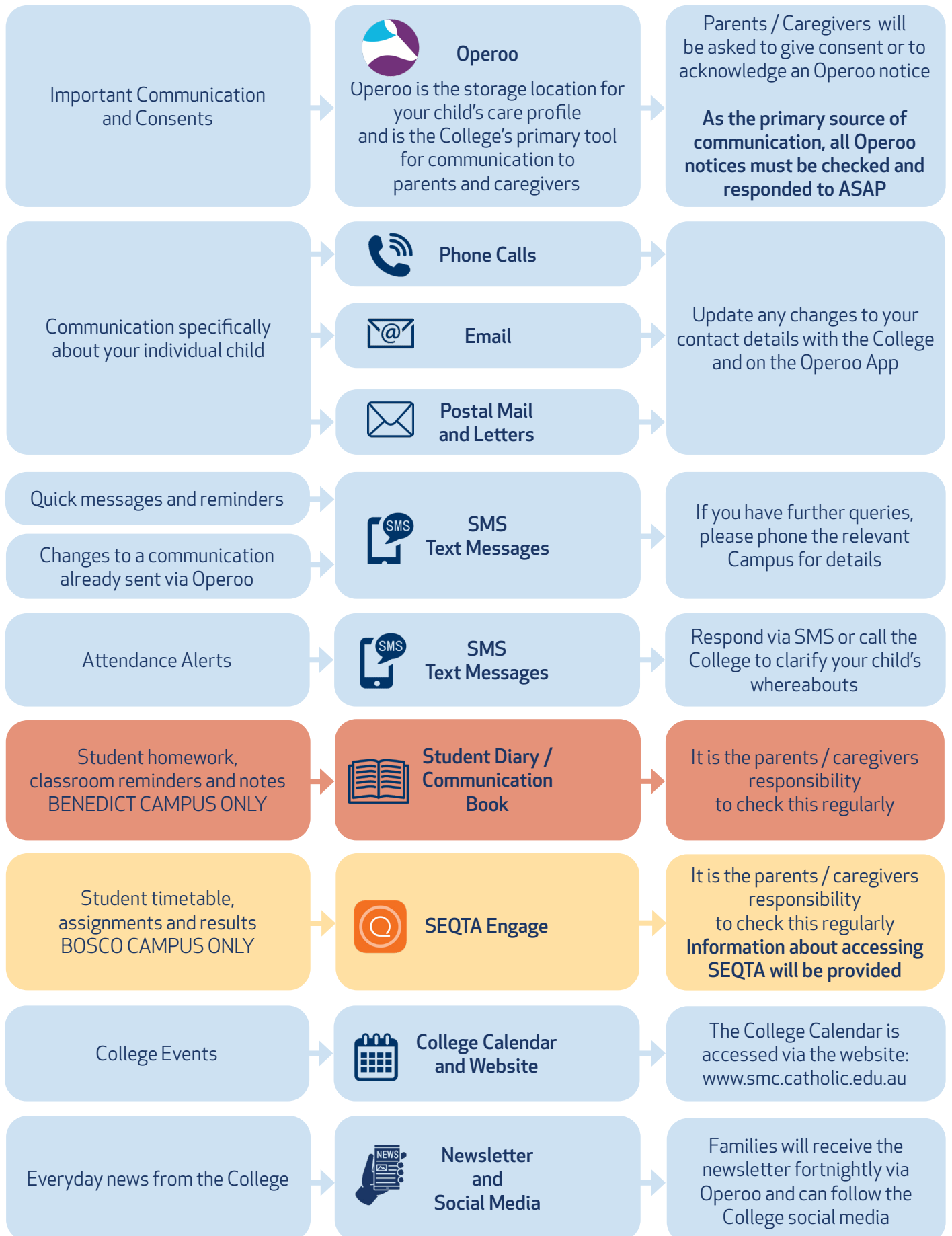
Ongoing breaches – will be reviewed for further action.

Breaches include but are not limited to:

- Use of a mobile device outside of those listed as acceptable.
- Failure to follow teacher direction.
- Inappropriate use of a mobile device in accordance with the College acceptable behaviour policies.



As a parent or caregiver, how will I receive information from the College?





As a parent or caregiver, how do I contact the College?

General Enquiries



Benedict Campus:
8633 8802
Bosco Campus:
8633 8801
College Administration:
8633 8800

Phone the College
in regards to any matters-
*we are always
very happy to help you!*

Student Attendance



SMS Text Messages



Benedict Campus:
8633 8802
Bosco Campus:
8633 8801

Please notify absence
before 9.00am via:
SMS Text Messages
SMS 0428 475 539 with:
Child's Full Name,
Year Level
and reason for absence
(sick, medical, family, social)
OR
Phone your relevant campus

Sensitive Enquiries Benedict Campus Wellbeing Subject / Classroom



Benedict Campus:
8633 8802

1. Discuss the matter with your child's classroom teacher
2. Make an appointment with the Pastoral Care and Wellbeing Coordinator, phone Benedict Campus
3. Make an appointment with the Deputy Principal, phone Benedict Campus

Sensitive Enquiries Bosco Campus Wellbeing Subject / Classroom



Email



Bosco Campus:
8633 8801

- Wellbeing**
1. Email your child's Homegroup Teacher or phone Bosco Campus to make an appointment
- Subject / Classroom**
- Email your child's subject teacher via SEQTA Engage or phone Bosco Campus to make an appointment

College Fees, Buses and Enrolments



College Administration:
8633 8800

Phone the College
to discuss your enquiry



ST MARK'S COLLEGE

BENEDICT CAMPUS: Primary, R - 6
Wandearah Road, Port Pirie

BOSCO CAMPUS: Secondary, 7 - 12
The Terrace, Port Pirie

SALESIAN HOUSE: Boarding, 7 - 12
The Terrace, Port Pirie

P: (08) 8633 8800

E: info@smc.catholic.edu.au

W: www.smc.catholic.edu.au