

OUT OF SCHOOL HOURS CARE

Vacation Care | 7 – 18 July

IN-HOUSE	FULL FEE	\$72.00	CCS REDUCED FEE*	\$10.80 - \$36.00
	EXCURSION / INCURSION	\$92.90	CCS REDUCED FEE*	\$13.94 - \$46.45

*Estimation of fees after subsidy is applied

WEEK 1

Monday
7 July

In-House

Gardening Day



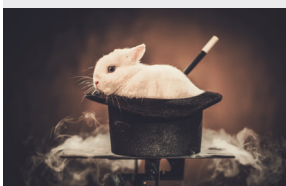
Let's get messy! We will be making grass heads, herb gardens and wildflower pots to take care of in OSHC. We will be researching how to re-plant certain foods to reduce green waste!

Outcomes: 1, 2, 3

Tuesday
8 July

Incursion

Magic Day



Tim the Magician will be visiting us again to teach us some awesome new tricks. Make magic paintings and play some magical group games!
Start: 11:00am
Finish: 12:00pm

Outcomes: 1, 2, 5

Wednesday
9 July

Excursion

Road Safety Centre



Due to popular demand, we are heading to the Road Safety Centre again! Let's learn the road rules and how to be safe on wheels!
Depart: 10:00am
Return: 12:00pm
Transport: Private Bus

Outcomes: 1, 3, 5

Thursday
10 July

In-House

Star Wars Day



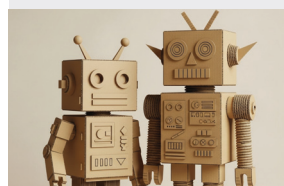
In a galaxy far, far away. Let's create some amazing galaxy art with paper mâché, make light Sabers, build our own starships and make some Wookiee muffins!

Outcomes: 1, 4, 5

Friday
11 July

In-House

Robotics Day



Learn the ins and outs of robotics! We are making DIY mini robots to take home, using recyclable materials to make ourselves into robots and having a robot Lego challenge!

Outcomes: 2, 3, 4

WEEK 2

Monday
14 July

In-House

Pirate Day



Dress as a pirate and let's search for that treasure together! We are creating maps, designing our own boats and playing some group games. Using teamwork to follow clues to find the hidden treasure!

Outcomes: 1, 4, 5

Tuesday
15 July

Excursion

Bute Fauna Park



We are headed to Bute today to see their fauna park of natural wildlife and to have lunch at the playground together!
Depart: 10:45am
Return: 1:45pm
Transport: Private Bus

Outcomes: 2, 3, 5

Wednesday
16 July

In-House

Vikings Day



Let's learn about Vikings! Use Viking runes to create phrases, and have our friends translate them. Make Norse helmets, use cartons to make ships to race each other and make Viking jewellery!

Outcomes: 2, 5

Thursday
17 July

In-House

Lights, Camera, Action



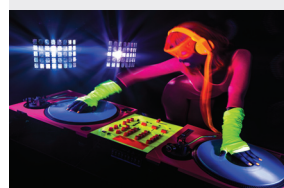
Let's get dramatic! Join groups to create your own show and record it! Use props, costumes and some cool lights to make an awesome short film!

Outcomes: 1, 4, 5

Friday
18 July

Incursion

Fun Day Friday



Celebrate the end of the holidays with a bang! OSHC party with loads of games. Jobe from Learn to Beatbox is coming to do a workshop with us!

Start: 2:45am
Finish: 4:45pm

Outcomes: 1, 4, 5



Book your session via the Xplor Home App

Visit sa.ymca.org.au/OSHC for more information

St. Mark's College OSHC
Benedict Campus
145 Wandearah Road, Port Pirie SA 5540
Tara Barber
0499 844 061

OSHC Support Team
P 08 8200 2516
E oshc@ymcasa.org.au
f/YMCA SA OSHC



OUT OF SCHOOL HOURS CARE

St Marks College OSHC

Important information

What is included

Breakfast and afternoon tea will be provided. Programmed activities including excursions, incursions and in-house activities.

What to bring

YMCA OSHC promotes a healthy eating environment and encourages families to provide their children with a healthy assortment of food to bring for recess, and lunch. As well as healthy brain food and a water bottle every day.

Fees and cancellations

All bookings must be received by Monday 23 June to avoid a \$3 casual fee. Cancellations must be made two weeks prior to the date of the requested care to avoid payment. By making a booking you are agreeing to pay the fees through your direct debit account in addition to normal OSHC bookings. Please review our terms and conditions online for our fee and policy information.

Excursions

Please make sure you arrive at the service at least 30 minutes before the bus departure. Please make sure you sign the Excursion Authorisation when you sign your children into OSHC for that day. While bus drivers in SA are exempt from ensuring passengers under 16 years are restrained. YMCA will make every effort to ensure the safety of all children by using seatbelts that are supplied and be guided by our policies and transport risk assessments.

Learning outcomes:



OUTCOME 1

Children and young people have a strong sense of identity



OUTCOME 2

Children and young people are connected and contribute to their world



OUTCOME 3

Children and young people have a strong sense of wellbeing



OUTCOME 4

Children and young people are confident and involved learners



OUTCOME 5

Children and young people are effective communicators

Sun Smart Policy

Sun Smart guidelines are followed so please ensure children are in appropriate clothing and no singlets or thongs. Sunscreen is provided but if your child is sensitive to sunscreen, please bring your own.

Things to remember

Please note that we are a nut-aware service and ask that you do not bring food that contain nut products. Handheld electronics and smart watches are not permitted at the centre. We welcome feedback and suggestions at any time, please see your centre staff. Programmed activities are subject to change.

Operational hours

OSHC will be open from 6:30am - 6:00pm, please sign in and out between these times.

Daily fees

In-house: \$72

*CCS Reduced fee: \$10.80 - \$36.00

Excursion and Incursion: \$92.90

*CCS Reduced fee: \$13.94 - \$46.45

*Estimation of fees after subsidy is applied



Book your session via the Xplor Home App

Visit sa.ymca.org.au/OSHC for more information